



Contains May 2018 Minutes

June, 2018

NO MEMBERS OR VISITORS SHALL ENTER OR EXIT THE CAMP VIA THE CHRISTMAN ROAD ENTRANCE. MEMBERS MUST ENTER AND EXIT FROM MT.PLEASANT ROAD.

**BUCKEYE WOODWORKERS
AND WOODTURNERS
May 12, 2018**

Anyone wishing to submit pictures for the newsletter please send them to the editor within two days of the meeting

*****Note*****

BWWT Business Meeting
May 12, 2018
Camp Y Noah

*Respectfully submitted,
Kim Ambrose, Sec.*

Dave Wells started the meeting with the announcements.

Bill Stone announced that Hartville Hardware has donated (9) carbon fiber handles by [Stuart Batty](#). They will be auctioned off at the 7/14/18 club meeting.

Ron Tomasch announced that smocks are being purchased in bulk with North Coast. He hopes to have sample sizes small, medium, large, by next meeting to determine which size fits, (extra large was on display). He stated they will cost around \$43.00 with the club logo and the name of the turner. He asked for payment at the time of ordering.

George Raeder talked about the Wayne Arts show 9/13-10/13/18. All submissions are due by the Sept. club meeting.

Marty Chapman said there is a woodturner sign up sheet being passed around for the Minerva Art and Jazz festival Saturday, May 19th, 11:00 AM to 6:00 PM.

Dave Wells reminded the club, the next meeting will be at [Doll Lumber](#) June 9th. He asked the club to please purchase wood from Doll Lumber to make it worth Doll Lumber's time. He also mentioned this year we are asking for a \$5.00 donation for the picnic. We plan on taking this money, and purchasing wood, for our raffle at our club meetings.

July 14th is the club auction, the members were encouraged to buy and bring items for the auction.

Aug 11th demonstrator is Gayle Seymour: inside-out ornament.

Sept 8th demonstrator is Johan Mickelson: cowboy hats.

Dave Wells reminded the club, there was a sign up sheet for members to help Wednesday evenings during June & July at Camp Y-Noah. Campers will be making pens and vases. The dates are not set, estimated to be middle of June through July.

Glen Graham is selling a vintage lathe, please contact Glen if you are interested. 330-854-3639.

Dave talked about the new BWWT Hall of Fame induction requirements:

1. Minimum of 5 years a member.
2. Active in club activities, such as the collaborative projects, demonstrations, mentoring, & building projects for the camp to name a few.
3. We will vote in new inductees annually at the club's May meeting.

This year's Hall of Fame inductee is Hoby Horn. Hoby was a founding member of BWWT, he is involved with collaborative projects, building projects for the camp, mentoring members, and many more club activities. He was given a new name tag that states Hall of Fame member, and his name was the first added to the Hall of Fame plaque.



Tim Niewiadomski's segmented bowl was chosen from the show and tell table.

Jack Boggio was given a \$50.00 Hartville Hardware gift card for his participation in the collaborative projects, using his stock for several club projects, and use of his shop, and food he provided.

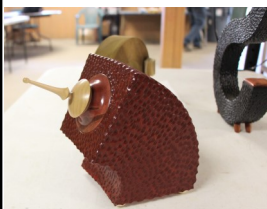
Ray Marr is selling BWWT logo hats for \$15.00.

Keith Bellamy won the name tag drawing.

**Pete Wade
(North Coast Woodturners)
Square Tube Hollow Forms
May 12, 2018**

*Respectfully submitted
Kim Ambrose, Sec.*

[Pete Wade](#) from the North Coast club is a self-taught woodturner. His father was a wood worker, and his family owns a machine shop in Cleveland. Pete built his own lathe & makes his own woodturning tools.



He markets his square tube hollow form designs as pet urns.

Pete's process for turning the square tube hollow form requires a dry wood blank because he parts off a thin layer of the wood and glues is back on after

hollowing. Wet wood moves too much for this process to work.

The main tools required for this work are: Bowl Gouge, Parting Tool(s), and a Band Saw. Pete mounted the trimmed wood blank on the lathe with a screw chuck.

He quickly trued up both sides and the edge of the blank with the bowl gouge. To aid in truing the back-side of the blank, Pete turned a dovetail tenon in the center of the



blank front. Since he planned to texture the finished form, he was not concerned about any marks left after truing. Pete then laid out the size of the ring for the hollow form with a pencil. He sized the ring based on the

blank thickness to give a square cross section for the hollow form.

He used a parting tool to establish the inside edge of the ring, and then the inner & outer walls of the ring, (1/8" wall thickness).

Pete marked the front of the blank and the side wall with a pencil so the cover could be aligned again after parting it off. He used a narrow parting tool to part off the thin



cover layer, but he also showed a jig that can be used on the band saw to cut the thin cover from the blank.

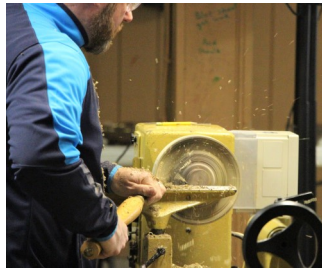
When using the narrow parting tool, you must take care to pause frequently to

let the tool cool. Pete used the heavy metal of the lathe bed to draw heat from the tool.

Once the thin cover has been cut free, set it aside and place some heavy items on top of it to keep it flat.

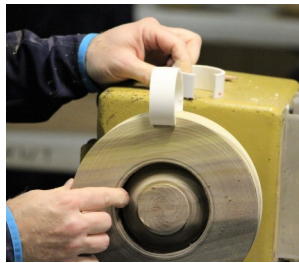


Pete then hollowed the ring from the front face using the bowl gouge & parting tool to form the rectangular walls of the hollow area.



He paused to check the depth using a ruler to achieve the 1/8" wall at the bottom.

Once the hollow region is finished, the top cover piece can be glued back on. Pete uses sections of PVC pipe as clamps to secure the top while the glue dries. Make sure to align the pencil marks so the wood grain matches.



After the glues dries, the part can be sanded, textured, stained, and/or dyed with a color.



Use the bowl gouge to relieve the area next to the center wall of the ring, then part off the ring with the parting tool. The center of the blank can also be turned into a small ring bowl.

Pete cut a section from the ring on the band saw and then glued it back in a different orientation to create an urn.



He used a hot melt glue gun to glue 4 small scrap blocks of wood onto the sides of the cut pieces of the ring because they can be removed easily after the glue-up. Two rubber bands placed around the blocks

secure the ring pieces while they are glued together.



You can also cut the ring into multiple pieces to create different vessel shapes.

Pete fits caps to the open ends of the vessels and typically turns a finial for the top cap.

The following additional information is excerpted from the [Feb 2015 issue of American Woodturner](#):

Square Hollow Bottle from One Disk

THE EVOLUTION OF AN IDEA

David Springett

Nick Agar's wavy-shaped hollow bottle, which has smooth, square, and uniform edges inside and out, was turned on two centers from a single disk of wood. The turning created an eccentric hollow ring, which was cut in half and reassembled, then sawn into segments and assembled again.

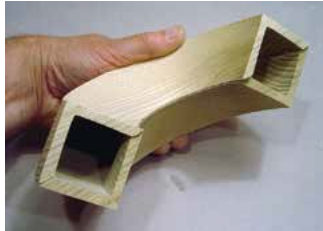
Photo: Nick Agar



AAW
EDUCATION

I am often asked where my woodturning ideas come from, as if I magically receive them. Usually I do not take note of the development of an idea, but when Nick Agar, my friend and fellow woodturner, and I decided to collaborate on a project, I became very aware of how this particular idea—which resulted in a square, hollow bottle form—evolved.

We began with a leftover from one of my books, *Woodturning Full Circle*, where I had turned square holes. That process derived from Stephen Hogbin's groundbreaking idea where he turned a bowl, cut it into two halves, then re-joined it on the uncut edges to create an unexpected form. I had turned a half of a hollow ring, then cut it and re-joined it to produce a square, hollow cross-section (Photos 1, 2).



To this I added an idea taken from Mike Hosaluk when I saw him demonstrating at a woodturning seminar at Loughborough, England. He turned a hollow cone, sliced the cone at an angle, then twisted the parts and rejoined them to produce a more interesting contorted form. I made a paper pattern to lay out and cut my square, hollow, half-ring into six careful segments, then carefully hand-sanded the cut ends. Each segment had a perfect square face so it could be rotated against the face of any other segment and glued there. This maneuver produced an interesting contorted hollow form (Photos 3–5).



The full article can be found on the AAW website [here](#). (Pages 28—34)

Calendar of Events

PLEASE NOTE

BWWT MEETINGS ARE HELD ON THE SECOND SATURDAY OF EACH MONTH BEGINNING AT 9:00AM

NO MEMBERS OR VISITORS SHALL ENTER OR EXIT THE CAMP VIA THE CHRISTMAN ROAD ENTRANCE. MEMBERS MUST ENTER AND EXIT FROM MT.PLEASANT ROAD.

BWWT Library Online Guide brought to you by the BWWT Club Librarians, Dirk Falther and Bob Hasenyager.

The online guide lists the books and videos that are available in our club library along with descriptions on the subject matter and other useful information. Follow the link below to check it out.

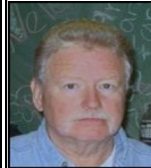
<http://uh.cx/uVS1S>

BWWT OFFICERS FOR 2018



President

Dave Wells
330-627-5209
wellsd0849@gmail.com



Vice President

Tom Nellis
330-947-3441
brewmeister43@hotmail.com



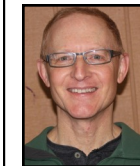
Secretary

Kim Ambrose
330-990-3271
lv2ohio@gmail.com



Treasurer

Mark Stransky
330-688-1690
mastran@neo.rr.com



Librarian

Dirk Falther
330-310-4570
dfalther3@att.net



Librarian

Bob Hasenyager
330-334-8314
bobhasenyager@gmail.com



Newsletter Editor

Keith Bellamy
330-221-2845
akbellamy@gmail.com



Membership Admin.

Phil Brower
330-688-7244
fbtoad@aol.com