



Contains December 2020 Minutes

January 2021

NO MEMBERS OR VISITORS SHALL ENTER OR EXIT THE CAMP VIA THE CHRISTMAN ROAD ENTRANCE. MEMBERS MUST ENTER AND EXIT FROM MT.PLEASANT ROAD.

**BUCKEYE WOODWORKERS
AND WOODTURNERS
December 12th, 2020**

Anyone wishing to submit pictures for the newsletter please send them to the editor within two days of the meeting

*******Note*******

**Buckeye Woodturners Meeting
ZOOM online meeting
December 12, 2020**

*Respectfully submitted,
Mark Stransky*

The December 12, 2020 meeting of the Buckeye Woodworkers and Woodturners was held via Zoom video conferencing. Dirk Falther hosted the meeting. There were more than 40 members signed in for the meeting. Today's demonstrator is Bob Baucom of Chapel Hill, North Carolina. Bob will be turning a laminated lantern ornament.

- Brent Wells welcomed all to the meeting. Before Bob started his presentation, Brent held a short business meeting for the members. Brent thanked all members, officers and advisors for the support they provided to him during the past year. It has been difficult at times due to the pandemic that caused many changes with both the schedule and club activities. He wished George Barlow success as President in the coming year and welcomed Marshall Holmes who will be serving as Vice-President.

- Brent informed members of the recent passing of Denise Stone, long time member of BWWT. Condolences go out to her husband Bob who is also a long time member. Denise will be missed by all who knew her.
- Brent gave an update on upcoming demonstrations. The January 9, 2021 demonstrator will be Harvey Meyer and he will be showing how he makes his basket illusion bowls. David Ellsworth be the demonstrator for the March 13 meeting. David will be demonstrating his natural edge bowls. The February 13 demonstrator has not been finalized yet. Stay tuned for updates for February.
- Mark Stransky gave an update on the Pens For Troops project. 220 pens have been completed and will be taken to the Woodcraft store in the coming week. Members who participated are Geoff Kennedy, Denny Finch, Dave Brobeck, Marshall Holmes, Ben Fix, Richard Rohr, George Barlow, Gayle Seymour, David Goldman, Ray Fealko, Jeff Haynam, Keith Bellamy, Brent Wells and Mark Stransky. Woodcraft will send the pens to Veteran's Administration hospital and rehabilitation facilities and various military installations around the world to distribute to troops.
- The winner of this month's BWWT Newsletter "Did You Read It" challenge was Tim Niewiadomski. Tim will receive a Hartville Hardware \$20 gift card. There were 14 members who read the newsletter and responded to Mark Stransky with the key word. As a recap, this is how it works: the first dues paying member to see a keyword buried somewhere in the newsletter and emails back to Mark Stransky that they have found it and where in the newsletter it was, will win their choice of a wonderful PRIZE of their choosing. The prize will be either a Hartville Hardware gift card or a woodturning blank out of my personal stash of blanks (don't worry – I promise to make it worthwhile). The new keyword for this newsletter is

"SKEW". For extra points (that will mean absolutely nothing) if the winner includes a tip, trick or question I might consider something extra special for the winner (like maybe a free donut when we start having meetings again).

- Dirk Falther gave an update on club finances. Dirk also reminded members that membership dues for 2021 are now due. Dirk will be sending out an additional notice via email and USPS to those who have not paid their dues.

Turning a Laminated Lantern Ornament

[Bob Baucom](#)

December 12, 2020

*Respectfully submitted,
Mark Stransky*

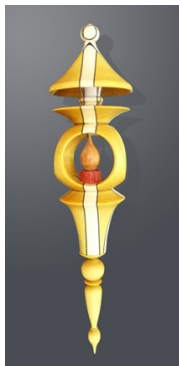
Bob Baucom is this month's demonstrator. He will be the making a laminated lantern ornament. Bob has made up a detailed handout of his demonstration. I have reprinted the handout with Bob's permission so that all of the details are included.



Bob before the pandemic / Bob after 9 months of pandemic

Introduction

I was looking for a way to use and improve my turning skills while making a gallery quality ornament. The origin of the lantern ornament began with an article in Wood Magazine back in 1996 when Ken Schaffer wrote an article on turning a lantern ornament. Since that article, Frank Penta has written an instructional handout for turning a lantern ornament. These two turners have written very good instruction articles. I am adding instructions on laminating the lantern body and paraphrasing Ken Schaffer's and [Frank Penta's instructions on turning the ornament](#).



Design Consideration

This is an ornament and should be light weight. The shape and size will depend on the size scrap wood used. Each ornament can be made slightly different in design and color depending on the type wood used. For the purpose of instruction, a 2" square blank 6" long will be used for the lantern body. A contrasting-colored wood cut 2" wide X 1/4"

thick X 6" long will be used for the lamination insert. The finial will be the same wood as the lamination insert of the lantern body. In this case a 3/4" X 3/4" X 5" blank will be used.

Laminating the Lantern Body

First things first. Lamination looks best when there are contrasting colors. As woodturners, we know there are lots of colored woods and different shades of browns, black, beige, cream, red, yellow and nearly white available for turning ornaments. It will be easiest to use a dark wood and a light wood for description purposes in these instructions. Experience has shown that Titebond III works best in gluing the wood laminates together because it has a 10 minute working time. The other Titebond glues' working time is only 5 minutes. Titebond glues work best under pressure. Pressure while gluing can be accomplished by using wood clamps or vises during the drying process. Start by choosing a 2" square blank 6" long with straight grain running the length of the blank. This will be the lantern body



Figure 1

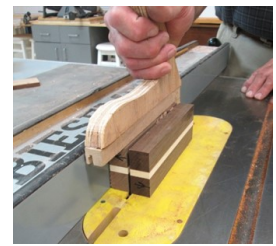
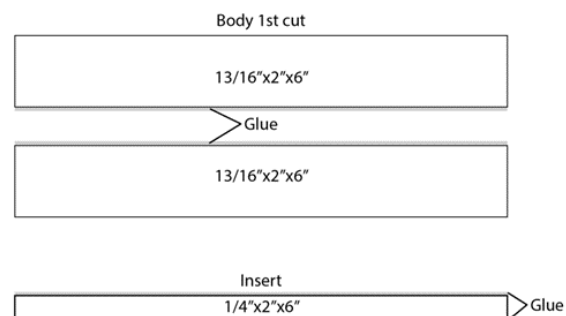


Figure 2

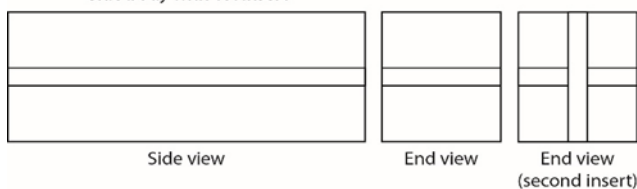
1. Cut the blank length wise into two 13/16" thick pieces (fig 1).
2. Take one of the 2 "x 6" x 1/4" inserts and the two pieces of body blank and apply a thin coat of wood glue to all of the fresh cut surfaces on the 13/16" blanks and the two sides of the 1/4" thick insert.
3. Glue the 1/4" thick insert between the two 13/16" thick pieces of the lantern body.



4. Now place the 6" long blank with the insert into a clamp to hold the sides of the glued pieces in alignment.
5. Then place the blank in a jig; square up the edges and clamp the pieces together.
6. Let the glue dry for 4 hours or more.

7. Remove the glued three piece blank from the vise or clamps.
8. Next cut the glued body blank into two 13/16" thick pieces lengthwise. (fig.2)
9. Now take the other 2 "x 6" x 1/4" insert and the two pieces you just cut and apply a thin coat of wood glue to all of the fresh cut surfaces on the two 13/16" blanks and both sides of the second 1/4" thick insert.
10. Align the glued pieces and place these into a clamp and apply pressure.
11. Then place the blank in a jig; square up the edges and clamp the pieces together.
12. Let the glue dry for 24 hours.

Glue body with 1st insert



13. Now sand or scrape away the excess glue and any wood that may have escaped the final alignment. The blank should remain 2" square and 6" long. Clean and true up the ends of the blank with a "chop" saw (fig. 3).



Drilling the Holes on the Lantern Body

1. First measure 2" from one end of the 6" lantern body blank. From the same end mark the 2" measurement on all four sides of the lantern blank.
2. Next find the center of the laminated insert of the blank and mark it where the just made 2" mark intersects it. Do this on all four sides. These points of intersection will be the centers of the holes in your lantern body.
3. With an awl make a small hole at each of the 4 intersecting points. These will help start the drill bit and help prevent it from skating.
4. Mount a 1-1/8" Forstner bit in a drill press.
5. Drill a hole at least 1 1/4" deep, but not all the way through the 2" blank on each of the four sides. Note: If there are several lantern bodies to drill a jig will make drilling easier (fig.4).

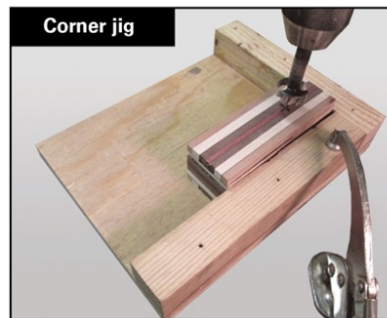
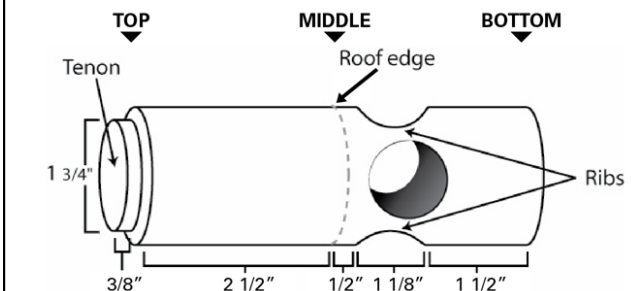


Figure 4

Turning the Lantern Body

1. To find the center of each end of the blank, make a line across the corners of the insert on each end of the blank. Use a center punch to locate the drive and live centers points. Make sure to mark the center across the corners of the insert and not across the corners of the entire blank. This will ensure that the ornament details are centered on the insert and the holes are not off center.
2. Place the drilled 2" X 2" X 6" laminated blank between centers and turn it to a cylinder.
3. Turn a tenon for chucking on the end with the most wood. Usually a tenon 1/8" inch deep and 3/8" wide will be sufficient.



4. Mount the blank into a chuck.
5. Bring up the tail stock to check the alignment of the blank. The point of the live center should fit back into its original location exactly. If it does not loosen the chuck and tail stock enough to line up the blank so that it is turning true on its original axis.
6. Now take out the live center from the tail stock.
7. Place a drill chuck in the tail stock and chuck up a 1/2" drill bit.
8. Drill a 1/2" hole starting at the dimple made by the live center point until it cuts cleanly through the base of the lantern to the four intersecting 1-1/8" holes. Just clear the holes, do not drill past them. This hole is for the final.
9. This 1/2" hole is a good place to set the tailstock to help stabilize the blank. Use a cone shaped live center in the tailstock. Once the tailstock is in place Do NOT over tighten. Overtightening can damage the ribs of the lantern. Once a rib is broken the blank can be dangerous to turn and it is best to start with a new lantern body blank.

10. Now measure 1¼" from the tail stock end of the blank up toward the 1-1/8" holes and mark it. This 1 ¼" is the area that forms the bottom of the lantern.
11. Now design and turn what the bottom of the lantern will be. The bottom of the lantern and the finial should be designed to blend together so there is a good transition from one to the other.
12. Turn the bottom of the lantern body at the tail-stock end. (fig.5)
13. The next step is to turn the rib area and middle of the lantern.

Note: The lantern bottom and ribs areas can be turned in different order or simultaneously going back and forth between the two sections to blend and refine the design of the lantern

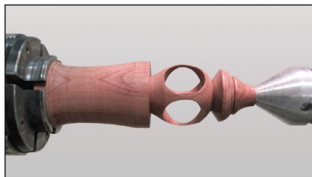


Figure 5



Figure 6

Turning the Lantern Ribs and Roof

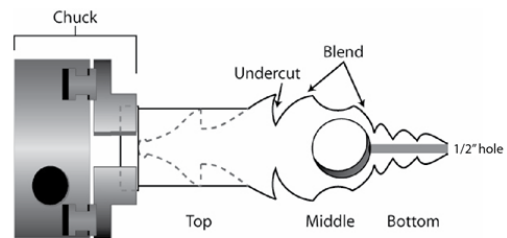
1. Turning the ribs requires steady deliberate cuts. Riding the bevel is essential. The ribs are basically a large bead turned around the large drilled holes. Mark the blank about 1/4" to 3/8" on either side of the 1-1/8" holes. These marks will be the approximate limit of the large bead. Use a gouge to carefully turn the bead above and below the holes drilled for the ribs. (fig. 5)
2. Stop the lathe every few cuts and check the size of all four ribs. When one of the ribs gets to the desired size stop turning the ribs. (fig.6). Any more turning will make this rib small and thinner. Now carefully sand the ribs. Sanding the ribs can be done by running the lathe and/or hand sanding with the lathe off. The important thing is to try and get all of the ribs the same size. Caution must be taken where there are one or more thin or fragile ribs. Sanding can damage the ornament if the ribs become too thin.

Note: Do NOT tighten the tailstock under any circumstances.

3. After the ribs are finished it is time to turn the top of the lantern. There are lots of ideas for lantern

designs with single and double roof tops (see gallery at the end). With a 6" blank either can be turned with the remaining unturned wood.

4. To turn a roof; make a taper just above the recess used for turning the ribs.



Example of double roof lantern design

5. Now under cut the roof. This will make the ornament lighter and the shadow created gives the roof depth. (fig.6)
6. At this point if you want a double roof repeat turning a second roof by starting about 2/3 up the side of the first roof's taper.
7. Under cut the second roof.
8. Finish turning the top of the second roof with a bead or point.
9. Sand the top of the lantern to the desired grit.
10. Carefully back the tailstock away from the lantern bottom.
11. After backing the tailstock from the lantern part off the lantern body.

Turning the Lantern Finial

The lantern finial will be turned in two parts. The first part will need to be ½" in diameter to slide into the ½" hole at the bottom of the lantern body. There are plenty of design considerations for the finial. This handout will describe a finial with a flame that fits inside the lantern openings.

1. Mount a 3/4" x 3/4" x 5" blank in a chuck and a live center. (fig.7)

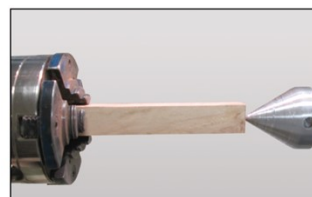


Figure 7

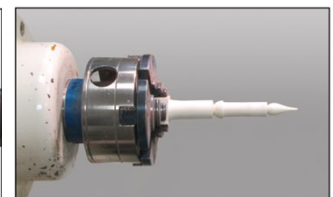


Figure 8

2. Measure 2-7/16" from the tailstock end and mark it with a pencil.
3. Now turn a 2-7/16" long by 1/2" diameter tenon with a square shoulder at the 2-7/16" mark.
4. Turn a 1/2" - 3/8" flame on the tailstock end of the blank.
5. Sand the turned areas. This part of the finial should look like a candle with a flame. (fig.8)
6. Take the blank from the chuck and check the fit of the candle into the 1/2" hole at the bottom of the lantern. The squared shoulder should stop the finial but allow the flame and a small section of the candle to appear in the opening of the lantern. This should be a fairly tight fit.
7. Once the finial fit is good place the sanded candle part of the finial into the #1 jaws of a chuck. The flame should be sticking inside the chuck past the jaws so as not to leave marks on the candle or flame. (fig.9)

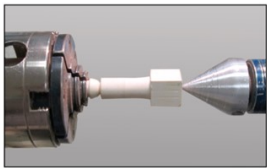
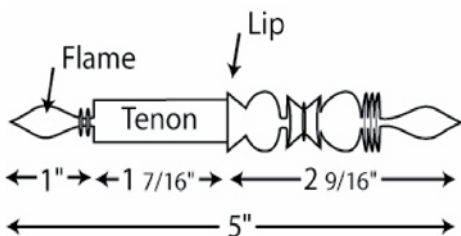


Figure 9



Figure 10

8. Now turn the bottom part of the finial. Check the finial to see if the design will blend with the lantern once it is glued in place (fig 10).
9. Sand the finial once you have the desired design.



10. Take the finial out of the jaws and glue it into place.

Once your laminated lantern ornament is turned and sanded, choose the finish that you like and apply it to the entire ornament. Your laminated lantern ornament is complete (fig. 11).

Wood needed for a 2" Laminated Lantern Ornament

- 1 piece - 2" x 2" x 6" hard wood with straight grain
- 1 piece - 3/4" x 3/4" x 5" hard wood of a contrasting color for finial
- 2 pieces - 1/4" x 2" x 6" same hard wood of a contrasting color as for finial

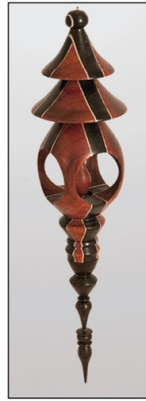
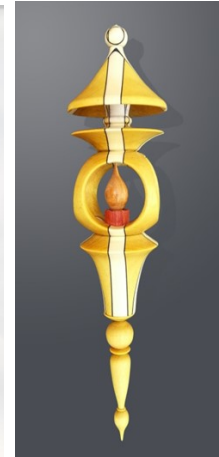


Figure 11

Tools needed for turning:

Roughing gouge, 3/8" or 1/2" spindle gouge, parting tool, 3/8" beading parting tool, chuck with #1 and #2 jaws, sandpaper up to 320 grit or higher, ruler, drill chuck, 1/2" drill bit, 1-1/8" Forstner bit, pencil, center finder, awl, Titebond III glue, clamps or vices, cone shaped live center



Bob's demo today was excellent. The demo that he did today was actually a little different from the handout, but was still very informative. Today's SKEW demonstration is also available for viewing on the BWWT website. If you would like more information on Bob's projects, techniques and handouts of his various demonstration topics check out his website www.bobbaucomwoodturner.com.

How About Something New???? (Reprinted from last month's newsletter)

At the last Show and Tell Zoom session, Dave Wells showed several gnomes that he had made. He got the information from the April 2020 newsletter of the South Bayou Woodturners in Louisiana. I thought it would be interesting to see how many more gnomes we could make and send images of to the Louisiana group. Since we can find the information on how to do it and pictures of what a gnome might look like, how about as a club we make our own little gnome village? I contacted Rick Myers, the President of that club and he gave permission to reprint the article in our newsletter. Rick said that the gnomes were a collaboration with SWAT. Unfortunately, my computer skills don't allow me to copy and paste .pdf files from one document to another, so

in order to make more gnomes, you will need to print the April 2020 newsletter for the South Bayou Woodturners with this link: www.bayouwoodturner.org/uploads/3/4/0/0/34006899/239_apr_2020_newsletter.pdf

Shown below are the gnomes that Dave made and some examples of the Louisiana gnomes. I am sure that if any of you get stumped on how to make these that a quick email to Dave Wells will get your out of the woods and back to gnome village.

Since our December meeting I know of at least three members who will be making gnomes for our village. Let's see how many we can get so we can have a good showing for the folks in Louisiana.

Dave Wells' gnomes:



Louisiana Gnomes:



TIPS AND TRICKS AND QUESTIONS – OH MY!!!

A few months ago, I inaugurated the Tips and Tricks and Questions section of the newsletter. This month, I had two tips come in that I think all will find very useful.

The first tip is from Gary Langenderfer. His tip was "when your email comes, read it as soon as you get it. You never know when you may have a clue for a \$20 Hartville Hardware gift card inside." (I did paraphrase this a little bit as I accidentally deleted his email before I wrote this up.)

The second tip is from Dave Wells with a good idea on making an inexpensive pen press that is always handy.

A simple, inexpensive, homemade pen press!

For those of you who like to make pens an expensive pen press is not necessary. One that I made and like to use was made with 1/4" rare earth magnets and 1/2" thick Corian. Other materials could be substituted for the Corian such as hardwood or wood with Formica covering the top side. Thicker Corian would be preferred if I ever remake them. The 2 pieces are a little larger in diameter than the headstock spindle and are made by countersinking the magnets on the backside and epoxying them in. The magnets should line up with your lathe spindle diameters. To use, place the pieces on your lathe headstock and tailstock spindles and use the tailstock to make the micro-adjustments when assembling pen parts. They are small and magnetic so they can easily be stored on the headstock ready for use! Dave



Thanks Gary and Dave. I will try to remember that free donut at our next in person meeting.

If anyone else has any tips and tricks they want to share, send them to me (include any relevant pictures or drawings that can be emailed) within 3 days of each meeting and I will include them in the monthly newsletter. It could be on any woodworking or woodturning topic. It also could be a short explanation of something that was seen in a demo. This would be a good way to keep everyone involved in what the club is doing since we have not been able to get together during the pandemic. Who knows – you might have the answer to one of the great mysteries of woodturning and you don't even know it yet! If this works out to be a good idea, I would even continue it after the pandemic when we can get together and exchange tips face to face.

In addition, if anyone is stumped on something, send me your questions and I will survey some of the more experienced members and hopefully get an answer to whatever is holding up your success. If you have any kind of question on something you have seen in a demo or have thought about while enjoying a cool beverage on the front porch, this is your chance to maybe get an answer. This can take the place of some of the conversations that always happened before and after our meetings every month. All I ask is that you keep your questions about relevant things that we do. I am not really qualified to find the answer to the meaning of life or anything political.

Don't hesitate to send in your tips, tricks and questions in time for the next newsletter.

SAFETY NOTE

Be sure to use proper safety equipment including eye, hearing and breathing protection whenever you are working on projects in your workshop. Make sure that you fully understand and follow the safe operating procedures for every piece of equipment that you use.

Calendar of Events

PLEASE NOTE

BWWT MEETINGS ARE HELD ON THE SECOND SATURDAY OF EACH MONTH BEGINNING AT 9:00AM

NO MEMBERS OR VISITORS SHALL ENTER OR EXIT THE CAMP VIA THE CHRISTMAN ROAD ENTRANCE. MEMBERS MUST ENTER AND EXIT FROM MT.PLEASANT ROAD.

BWWT Library Online Guide brought to you by the BWWT Club Librarians, Dirk Falther and Bob Hasenyager.

The online guide lists the books and videos that are available in our club library along with descriptions on the subject matter and other useful information. Follow the link below to check it out.

<http://uh.cx/uVS1S>

BWWT OFFICERS FOR 2020



President

George Barlow
330-277-6055
gwbjr80@gmail.com

Vice President

Marshall Holmes
330-877-3265
mlholmes@neo.rr.com

Secretary

Mark Stransky
330-283-1375
mastran@neo.rr.com



Treasurer /Member Admin.

Dirk Falther
330-310-4570
dfalther3@att.net



Librarian

Bob Hasenyager
330-334-8314
bobhasenyager@gmail.com



Newsletter Editor

Keith Bellamy
330-221-2845
akbellamy@gmail.com

