



Contains August 2015 Minutes

September, 2015

NO MEMBERS OR VISITORS SHALL ENTER OR EXIT THE CAMP VIA THE CHRISTMAN ROAD ENTRANCE. MEMBERS MUST ENTER AND EXIT FROM MT.PLEASANT ROAD.

**BUCKEYE WOODWORKERS
AND WOODTURNERS
August 8, 2015**

Anyone wishing to submit pictures for the newsletter please send them to the editor within two days of the meeting

**BWWT Regular Meeting
Aug. 8, 2015**

**Respectfully submitted
Jerry Schaible, Sec.**

The regular meeting of BWWT was held at Camp Y Noah, Kastner Hall facilities at 9 am on August 8, 2015. The following items were discussed:

1. The membership was informed that John Lucas was to be our guest speaker, but he had to decline, due to medical issues of recent days. So we will have a half day session and feature Hoby Horn and George Raeder as member speakers on turning bowls and platters, watching for grain patterns, and tool presentation to the wood surfaces. Then later in the discussion we will feature a panel of turners to answer any questions from the general membership.

2. There will be the Quarterly Tool Drawing during the meeting. We have 7 tools that have been purchased by the club and members will be drawn from the sign up sheet.

3. In Sept. we will have Dirk Falther demonstrating a turned piece using multi axis turning centers. In October we will be attempting to get a speaker from the Cincinnati Symposium. In November, we will have

Bob Hasenyager. Bob will show us how to turn a cryptex box.

4. The Paul Bunyan Show will be in Cambridge Ohio, in Guernsey County on Oct 2,3, & 4. The times are 8am to 5pm each day except on Sunday when they will close the show at 3 pm. This will be held at the county fairgrounds. We have four booths available for our club members. Three of the booths have already been spoken for. There is no cost for our members to use these booths. It would be appropriate to sign up for at least two of the three days of the show. Pres. Stone has 6 to 8 tickets for the show if anyone would like to just go down and see the show. Contact Bill for further information.

5. The Hartville Tool Sale will be November, the week before Thanksgiving. We will be having a booth for BWWT and we will need members to do some turning before the large crowds that come to the store. See Bill Stone if you are interested in participating in this event.

6. Richard Rohr, VP of BWWT, gave a short talk on the collaborative turning effort that we are currently doing. He indicated that the project is a spinning wheel and it is based on the collaborative efforts supported by the national AAW organization. They started out with 13 original members and they searched for ideas on what the topic should be. There currently are 47 items that needed to be turned to complete the project. We have had one test fitting of the pieces and they went together pretty good. They will be test fitted again today after the regular meeting to see how some minor adjustments came out. There is a short video that will be made up showing the process to make all the pieces. This will come from the turners who have worked in their shops to create the pieces. There will be a bill of materials that will show all the pieces and who actually made up each piece. It is hoped that the spinning wheel can be shown at the Wooster Art Show during Sept and then later shown at the Hartville Hardware Tool Sale in November 20 and 21. All members of the collaborative effort

will meet on Sat. August 15 at Hartville Hardware at 9 am. in the lumber division at the lower level.

7. George Raeder indicated that all turned pieces to the Wooster Art Show should be turned in today. He said that he will be taking them down to the show so that they can be unpacked and judged. If anyone is going to take their project to Wooster themselves, they are to have them on site before 10am on September 3 at the Wooster Center for the Arts. Call the Art Center to make sure they are open. The opening night of the show will be on Sept. 17, from 6 to 8 pm.

8. Treasurer, Mark Stransky, gave a treasury balance to the membership. He also said that we had a very good auction and it should be noted that Ray and Dianne Marr donated all the food for the activity. Mark also went on to state that since we will not have John Lucas available for the Hands On activity, members who signed up for the turning session can see him to get their refund. Mark went on to state that name tags, tool steel and CA glue is available for sale to the members at the leadership table. He also stated that the Larry Jones Memorial Fund came to a total of \$430.

9. The name tag drawing was held and Tim Niewiadomski won the gift certificate to Hartville Hardware.

10. The monthly raffle was held and many prizes went home with the members.

Hartville Tool Club Member Discount Program and E-Newsletter Information

From: Doug Weingart

[mailto:dweingart@hartvilletool.com]

Sent: Monday, August 10, 2015 10:09 AM

To: Mark <mastran@neo.rr.com>

Subject: Hartville Tool Club Discount Program - New BWWT Members

Mark,

Thanks for the update! You can let these members know that we should have them enrolled within the next few days.

Please make sure they all get a copy of the Member Buying Instructions (attached).

Also, please be sure to advise your members to sign up for

our Free, twice weekly E-Newsletter. To sign up for the E-Newsletter, members simply go to the "Sign Up and Hear About Promotions" tool on the left side bar of our Home Page (<http://www.hartvilletool.com/>) and submit their e-mail address.

Let me know if you have any more questions or need anything else.

Best Regards,
Doug Weingart
Club Discount Program Coordinator
Hartville Tool
clubs@hartvilletool.com
www.hartvilletool.com
800-345-2396



800-345-2396

www.hartvilletool.com

Hartville Tool Club Member Discount Program Buying Instructions

Discount

The club discount is 15% off regularly priced items. Some exclusions apply (see Exclusions below).

Ordering Online

Go to our web site (www.hartvilletool.com) and shop as usual. When you are ready to check out be sure to mention that you are a Club Member in the checkout notes at the bottom of the Billing/Shipping Address page, and we'll be sure to give you the discount on all applicable items, as we currently physically review every order that comes through. The discount will not show on your e-receipt, but it will show on the hard copy that comes with your order.

Ordering by Phone, Fax, or Mail

To help ensure that you receive the special discounted club pricing when ordering by phone, fax, or mail, you should be sure mention that you are a Club Discount Program participant.

To place an order by:

* Phone - Call 800-345-2396, Mon. through Fri. 8 AM to 5 PM Eastern time.

* Fax - Call 330-877-4682, anytime 24/7

- Mail - Send orders to:

Hartville Tool
Attn: Order Dept.
13163 Market Ave. N.
Hartville, OH 44632

Exclusions

- Discounts apply to regularly priced items from Hartville Tool only.

- If an item is on sale or special, the member will be given the lower of the prices. Either the sale or special price, or the discounted price, but not both. No further discounts will be given and offers cannot be combined.

- Offer also excludes:

Shipping & Handling Charges (If applicable)
Taxes (Ohio delivery addresses only)
Gift Certificates/Cards
Custom/Special Order Items
Festool Products.

All prices and exclusions are subject to change without notice.

George Raeder / Hoby Horn Woodturning Hints and Helps

Respectfully submitted
Jerry Schaible, Sec.

The following turning hints were taken from a demonstration talk that George and Hoby had on August 8, 2015. This talk was given to the regular membership of BWWT and the following items were discussed.....

1. When traveling, it is tough to keep your tools sharp while they are in the wood turning bag. So George indicated that one could go to Hartville Hardware and purchase some different sizes of plastic tubing. The different sizes would fit the different sizes of tool steel that each turning tool has. Slip the correct size plastic tubing



over the sharp end of the turning tool and it will prevent it from touching other metal accessories and tools that you might have in your bag.

2. George uses several blocks of wood that are about 1 ½ x 3 x 3 inches. Then in one of the blocks he drilled a hole to a 2" depth. Other blocks were drilled to 1 ¾" depth and 1 ½" depth. These are used for sharpening his bowl and spindle gouges to the correct length to fit the Wolverine jig.

The gouge has to protrude out the front of the bowl gouge drilling by one of those amounts.



You simply put the drilling jig on the end of the turning tool and insert the end into the proper hole in the block of wood and you have reached the correct depth every time. This helps provide the same grind every time you go to the grinder with the tool.

3. George made a support for his skew so that he gets the correct grind each time. This was made from a piece of wood ¾ x 1 ½ x 12" approx. He placed a wooden cutout to capture the end of the turning tool



handle and hold it steady while the sharpening action takes place. Then he clamps the holding jig to the underside of his long Wolverine arm that comes with the kit. He flips the arm upside down, 180 degrees, from Wolverine jig instruction requirements. Place the tool in the handle cradle and lay the metal tool on the grinder at the proper angle to get a fine grind on the edge of the skew.

4. George made a go / no go gauge for his scroll chuck. The best holding angle for the chuck is when the chuck jaws are almost at a complete circle. So take measurements of the jaws when they are in that position on the interior recess hold and another measurement of the exterior tenon hold.

Lay out these measurements on a 4x4x1/8" piece of Baltic birch plywood. Cut out the half circle shapes, recesses and tenon shapes along each of the sides. Then one can easily



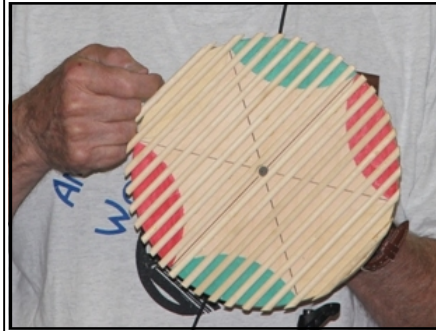
check the turning recess or tenon to see if they fit the profile created on the plywood jig. George went on to state that the dovetail jaws are infinitely better than the serrated jaws that come with the scroll jaw. Serrated jaws will tear up the wood very easily.

5. George displayed a measuring device that would show the thickness of a turning and give an accurate reading of how much more of the wall thickness could be removed by additional turning steps. This looked like the letter "C" with a small protruding ad-



justment knob that would slip across the opening of the C. When it bottoms out then one can check the amount of rod that is still protruding and assume that the wall thickness has been measured accurately. This can be used on open bowls as well as enclosed vessels, providing that the entrance hole is large enough. It was noted that this is an extremely accurate method of measuring the wall thickness.

6. George indicated that when turning bowls, one can have two opposing sides of a bowl with very smooth cutting by the turning tool, but then the other two sides



around the bowl are very rough. George pointed out that this is due to the fact that there is end grain running the bowl blank.

When the tool is cutting the side grain, you will get a very

smooth cutting surface with little sanding needed.

When the tool is cutting across the end grain, then you will get a very rough cutting surface and maybe even some end grain tear out. You will have to do a lot of sanding and may still not get all the rough surface smoothed out. End grain is very difficult to deal with. George indicated that you will need to have very sharp tools to make good cuts on end grain. George went on to state that the reason you get good cuts on side grain is that each grain line is backed up by other fibers and this provides support for the cutting action while end grain will tear out with no support. George indicated that you can use a high sheer cut with the handle way down and pointing to the floor. Hobby demonstrated this procedure on a piece of yew bowl blank to show what was occurring.



7. George indicated that turning a bowl does provide some challenges in that when turning the bowl near the upper rim you will need a bowl gouge with a grind of 40 degrees and then when turning near the bottom of the bowl you may need a grind of 20 degrees in order to make that difficult across the bottom interior.

8. George will many times sharpen his scrapers upside down on the grinder. His reasoning for doing this is that he gets more of a burr on the edge of his tool as compared to grinding it with the tool up in the standard position. Many times scrapers are used on the interior of the bowl to remove any small undulations that may have been left by the bowl gouge. Hobby went on to add that the scraper must be used with the

front of the tool downhill about 10 degrees from the tool rest. Hoby explained that if you have it in a negative 10 degree slope and you get a catch, the



tool edge will simply drop away into air and no damage will occur to the piece. If you have a positive angle or upward slope from the tool rest and you get a catch, you will dig deeply into the side of the bowl and cause irreparable harm to the bowl sides. When using the scraper, it is the burr edge that will cut the bowl sides cleanly. One can also create a negative rake on the scraper edge by grinding another small surface on the tool. Sometimes this negative rake grind is very valuable on the interior of a small box.

9. Hoby demonstrated the use of push and pull cuts on a bowl. He said that there are times when each will have its place in the turning of the bowl blank. It was noted that the interior of the surface is better with a push cut. There will have to be some sanding necessary with a pull cut on the interior.



Push Cut



Pull Cut

10. Hoby indicated that he uses the screw chuck all the time and has had very good luck with it. He claims that it is accurate and holds the bowl blanks in position for accurate cutting on the exterior of the bowl. One can complete the whole bottom includ-

ing the recess or tenon that one uses when they turn the blank around to do the interior.

11. It was pointed out by Hoby that the back of the bowl gouge must be perfectly aligned and match the interior near the rim of the piece or the tool will skate you and the tool will fly to the left and possibly chip out a piece of the rim. He said that some turners use a parting tool to start the cut near the rim and this provides a small surface for support of the grind on the tool. The tool should not jump or skate away to the left since it will be supported correctly.

12. When turning boxes, the grain will be running in a different direction. Here you will find mostly end grain cutting. Here the use of a bedan will be very helpful. A bedan is a straight tool where the sides of the tool are being cut or ground away a little bit to a 10 deg to 12 degree slope. Looking at the end profile, it will represent a small trapezoid. In the box, you could use a small drill to drill out a hole in the center of the box blank. One could also use a small gouge to drill the hole. In either case, make sure that you measure accurately so as to not drill out the bottom of the box. Then use the small bedan to keep cutting toward the outside of the box until you have the correct thickness that you want to achieve. To provide for final clean up of the interior, one might use the negative scraper to smooth up the walls of the box and where it meets the bottom.

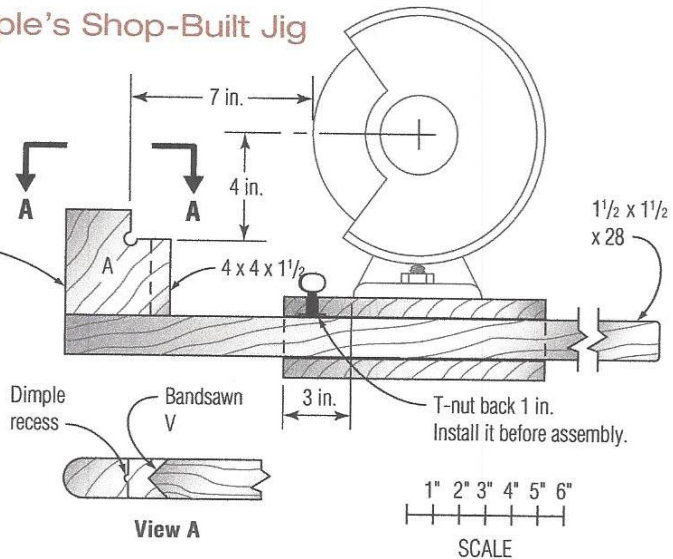
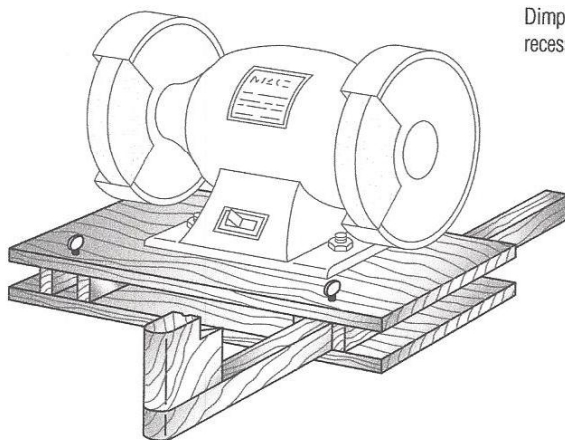
13. If you are an advanced turner, you might want to create a Fingernail grind or a Dave Ellsworth grind with a serious swept back design on the tool tip edge. This will provide a straighter edge on the tool and it can be used in turning surfaces, also. However Hoby warned that you better be able to hold the tool correctly in order to use this tool.

14. The panel determined that the Wolverine Sharpening jig is a very valuable aid when sharpening your tools. It was stated that it can pay for itself because only extremely small amounts of metal are removed each time you grind the tool and the tools will last much longer as compared to hand held grinding. It was noted that one can search on the internet and find plans for making your own sharpening jig.

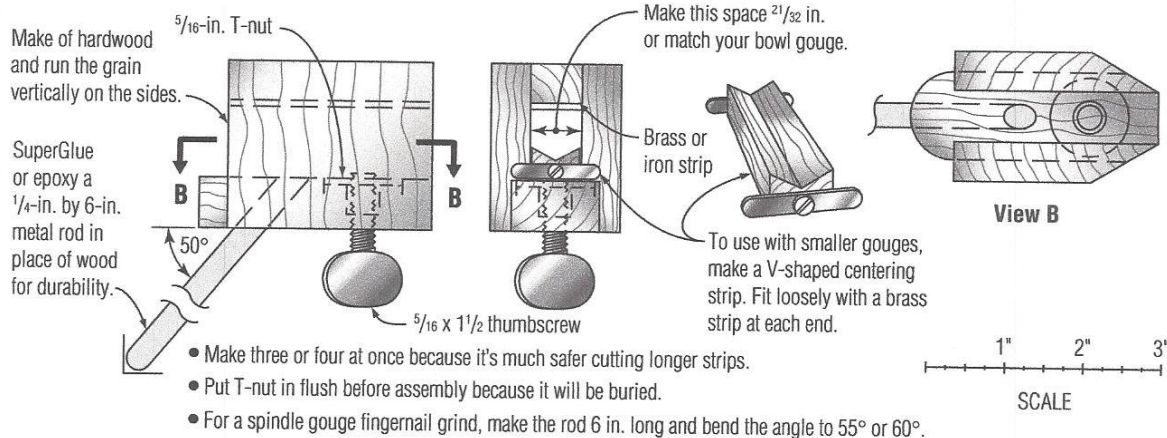
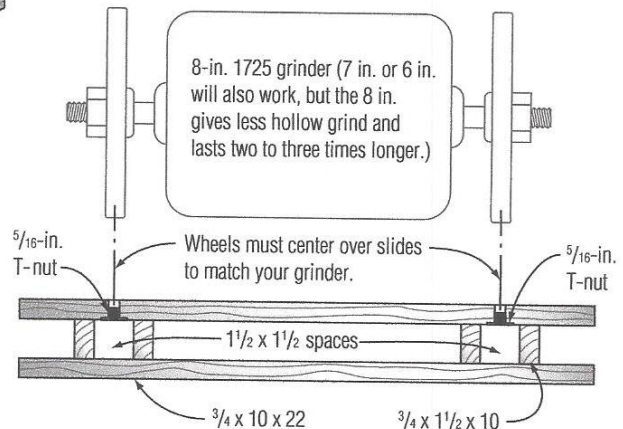
15. It was noted that one can purchase some flex measuring tape and attach it to the long arm of the grinding jig and then just use the numbers to pull out the arm to the correct length. Once you have become comfortable with a particular grind then set the bowl gouge jig and leave it alone, so that next time you will be grinding the tool at the same angle.

King Heiple's Shop-Built Jig

The height of wood block A will vary depending on whether you are using an 8-in., 7-in., or 6-in. grinder. The goal is to have the pivot dimple 4 in. below the midpoint of the wheel and 7 in. out.



The only metal parts on the jig are two $\frac{5}{16}$ -in. T-nuts and matching thumbscrews.



- Make three or four at once because it's much safer cutting longer strips.
- Put T-nut in flush before assembly because it will be buried.
- For a spindle gouge fingernail grind, make the rod 6 in. long and bend the angle to 55° or 60°.

Show and Tell



Tool Drawing Winners



Calendar of Events

PLEASE NOTE

BWWT MEETINGS ARE HELD ON THE SECOND SATURDAY OF EACH MONTH BEGINNING AT 9:00AM

September 12, 2015....Dirk Falther Multi-Axis Turning a Pepper Mill

October 17, 2015....Guest Speaker from Cincinnati Symposium.

November 14, 2015....Bob Hasenyager Cryptex Box

NO MEMBERS OR VISITORS SHALL ENTER OR EXIT THE CAMP VIA THE CHRISTMAN ROAD ENTRANCE. MEMBERS MUST ENTER AND EXIT FROM MT.PLEASANT ROAD.

BWWT Library Online Guide brought to you by the BWWT Club Librarians, Dirk Falther and Bob Hasenyager.

The online guide lists the books and videos that are available in our club library along with descriptions on the subject matter and other useful information. Follow the link below to check it out.

<http://uh.cx/us4im>

BWWT OFFICERS FOR 2015



President

Bill Stone
330-896-3687
wilsto@neo.rr.com



Vice President

Richard Rohr
330-484-2830
ritchard.rohr@powellind.com



Secretary

Gerald Schaible
330-673-6512
gschaible001@neo.rr.com



Treasurer

Mark Stransky
330-688-1690
mastran@neo.rr.com



Librarian

Dirk Falther
330-310-4570
dfalther3@att.net



Librarian

Bob Hasenyager
330-334-8314
bobhasenyager@gmail.com



Newsletter Editor

Bob Stone
330-928-3221
bstone@neo.rr.com



Web Master

John Adams
440-838-1122
jadams@nacs.net



Membership Admin.

Phil Brower
330-688-7244
fbtoad@aol.com